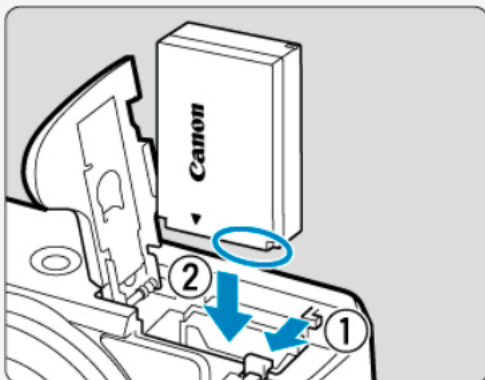
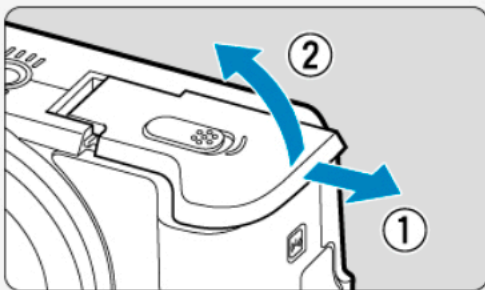


## Quick Start Guide

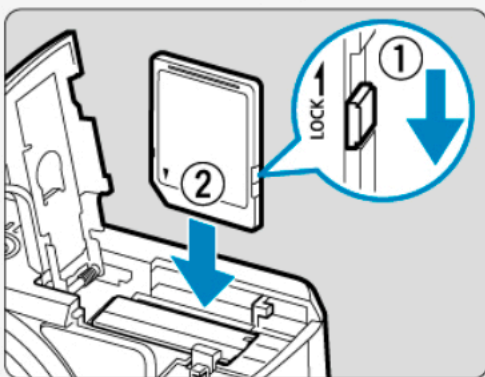
---

### 1. Insert the battery (🔗).



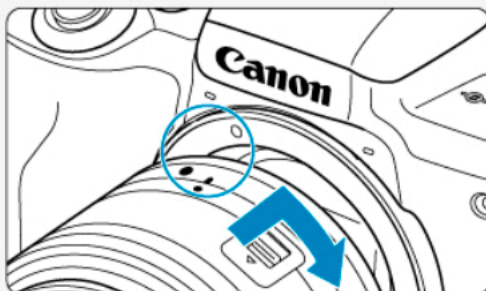
- Upon purchase, charge the battery to start using (🔗).

### 2. Insert the card (🔗).



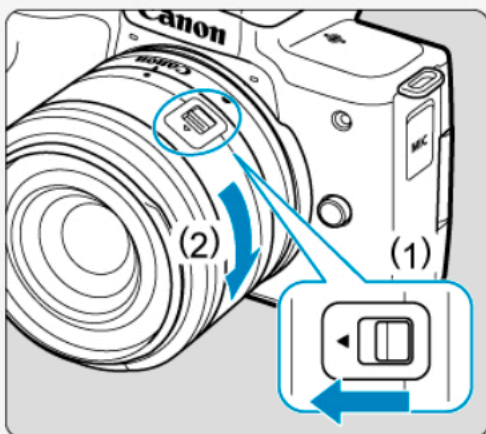
- Insert the card with the label facing the front of the camera until it clicks into place.

### 3. Attach the lens (🔗).



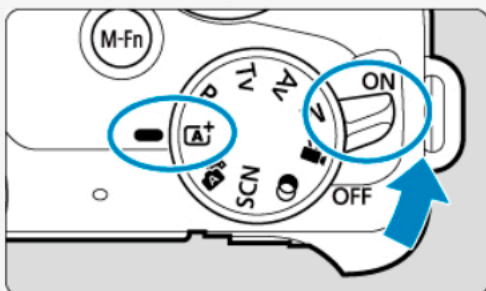
- Align the lens mount indexes (white) on the lens and camera to attach the lens.

### 4. Prepare to shoot (🔗).



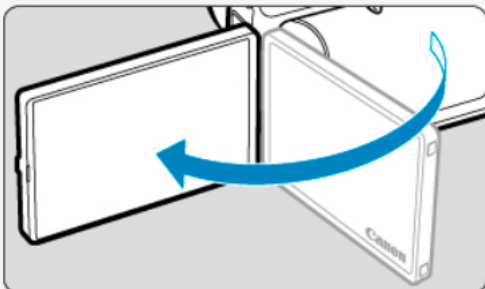
- Press (1) as you turn (2) slightly, then release (1).
- Turn (2) a little more until it clicks.

### 5. Set the power switch to <ON>, then set the Mode dial to <A+> (🔗, 🔗).



- All the necessary camera settings will be set automatically.

## 6. Flip out the screen (📷).



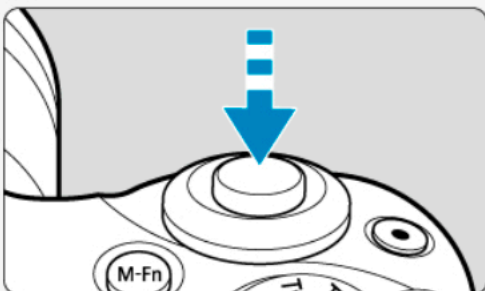
- If the [Date/Time/Zone] setting screen is displayed, see [Date/Time/Zone](#).

## 7. Focus on the subject (📷).



- Center the subject on the screen.
- Press the shutter button halfway, and the camera will focus on the subject.
- If <⚡> blinks on the screen, manually raise the built-in flash.

## 8. Take the picture (📷).



- Press the shutter button completely to take the picture.

## 9. Review the picture.



- The image just captured will be displayed for approx. 2 sec. on the screen (📷).
- To display the image again, press the < ▶ > button (📷).