

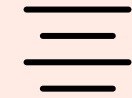
March 2nd 2022



B

I

U



REVIEWING AND
LOGGING OUR
FOOTAGE 



AIMS AND OBJECTIVES

REVIEW FOOTAGE

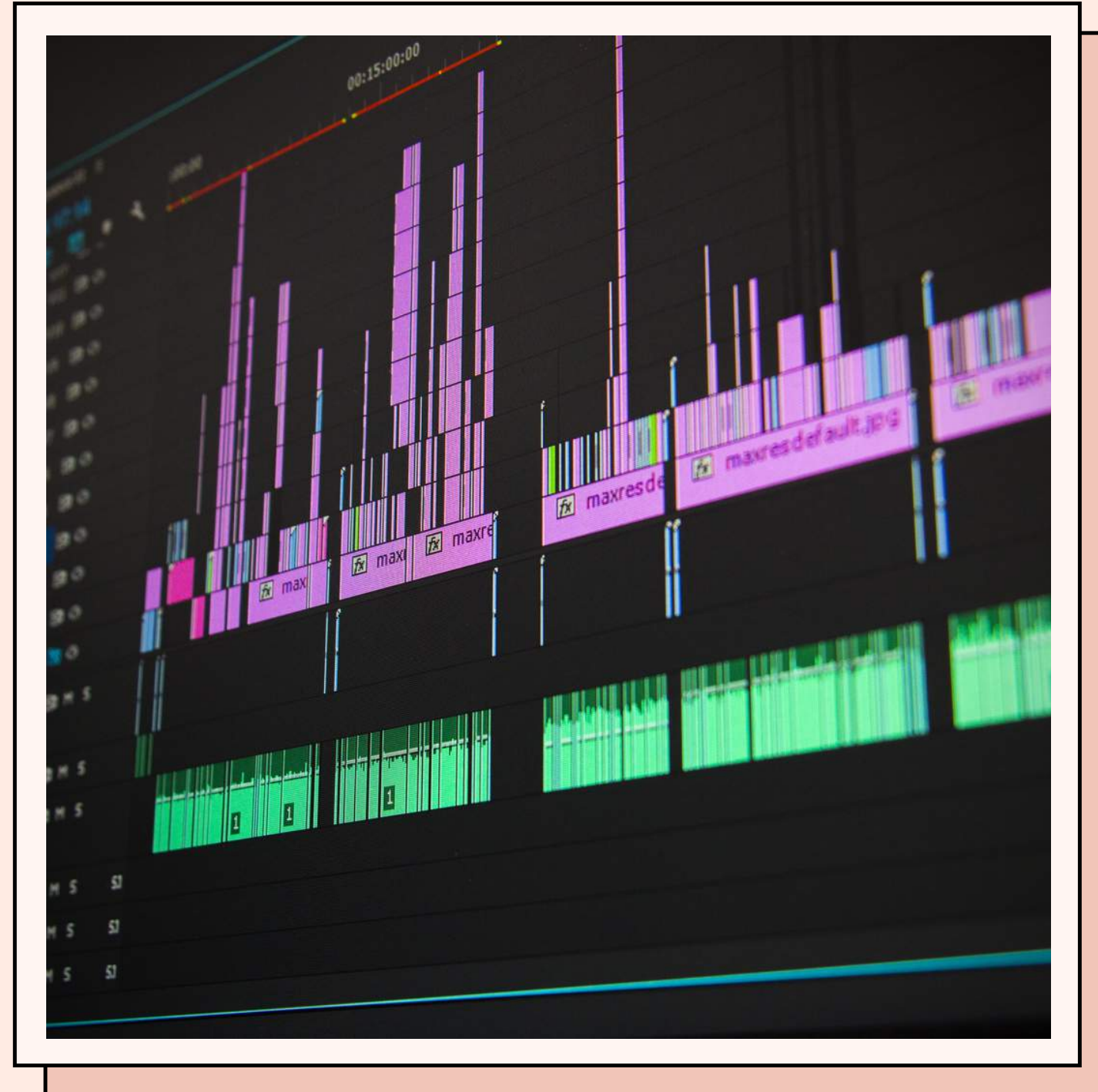
1. To identify key areas to focus on when reviewing our footage

SCREENSHOTS

2. To screenshot our footage, workspace and folders to show organisation!



What are some key features we need to look out for when reviewing our footage?



THINGS TO LOOK FOR WHEN REVIEWING FOOTAGE

Continuity
Lighting
Framing
Performances
Camera movement
Camera angles
Camera Shots

Camera shake
Things interrupting filming
Distractions
Sound quality
Audio from others



DROPPING A LOG!



WHEN YOU BEGIN TO IMPORT/LOG YOUR FOOTAGE

Make notes based on those key features to identify which clips you have selected and why you made that choice!

You dont need to talk about every clip you have chosen, just examples of things you can discuss in detail!

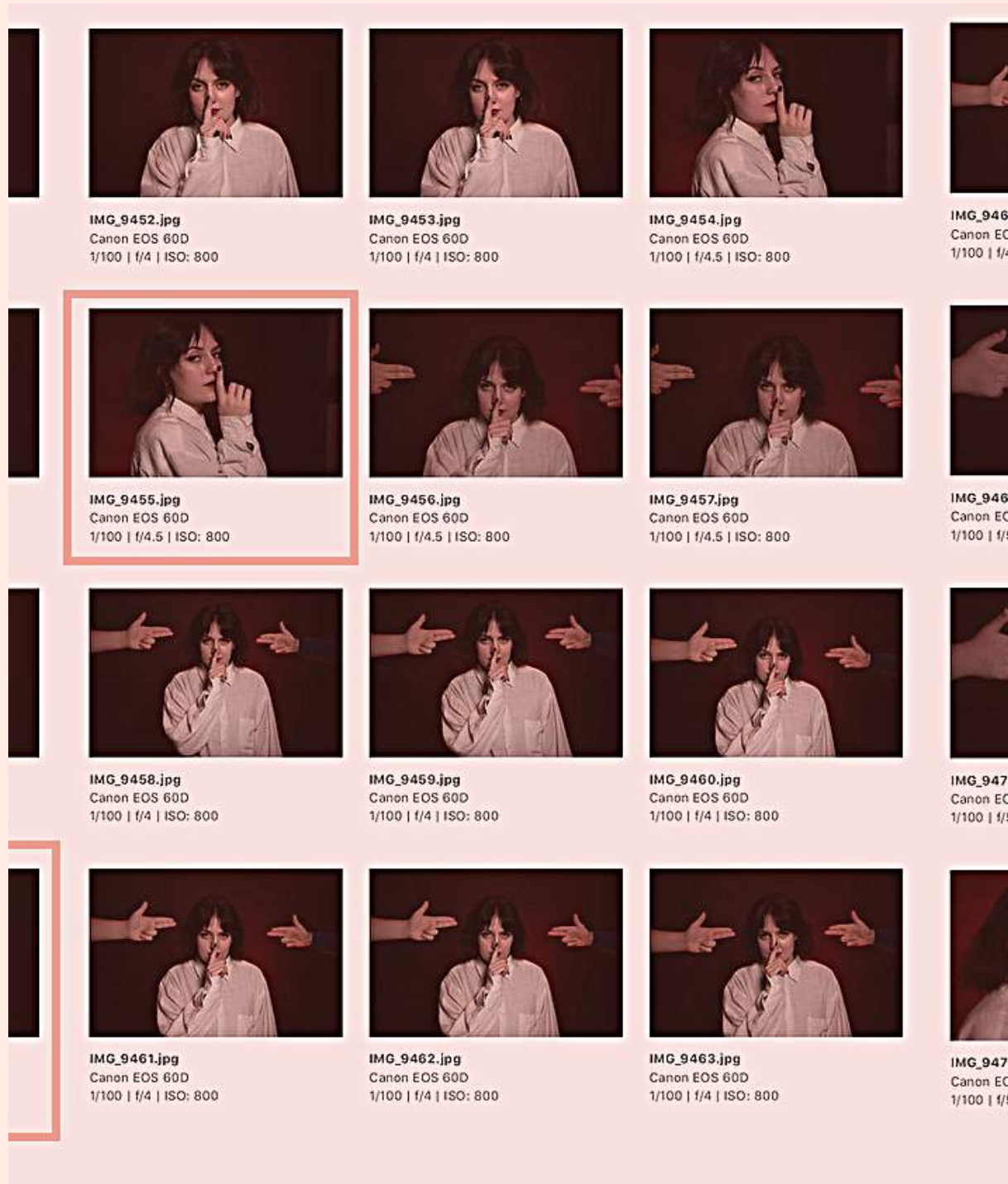


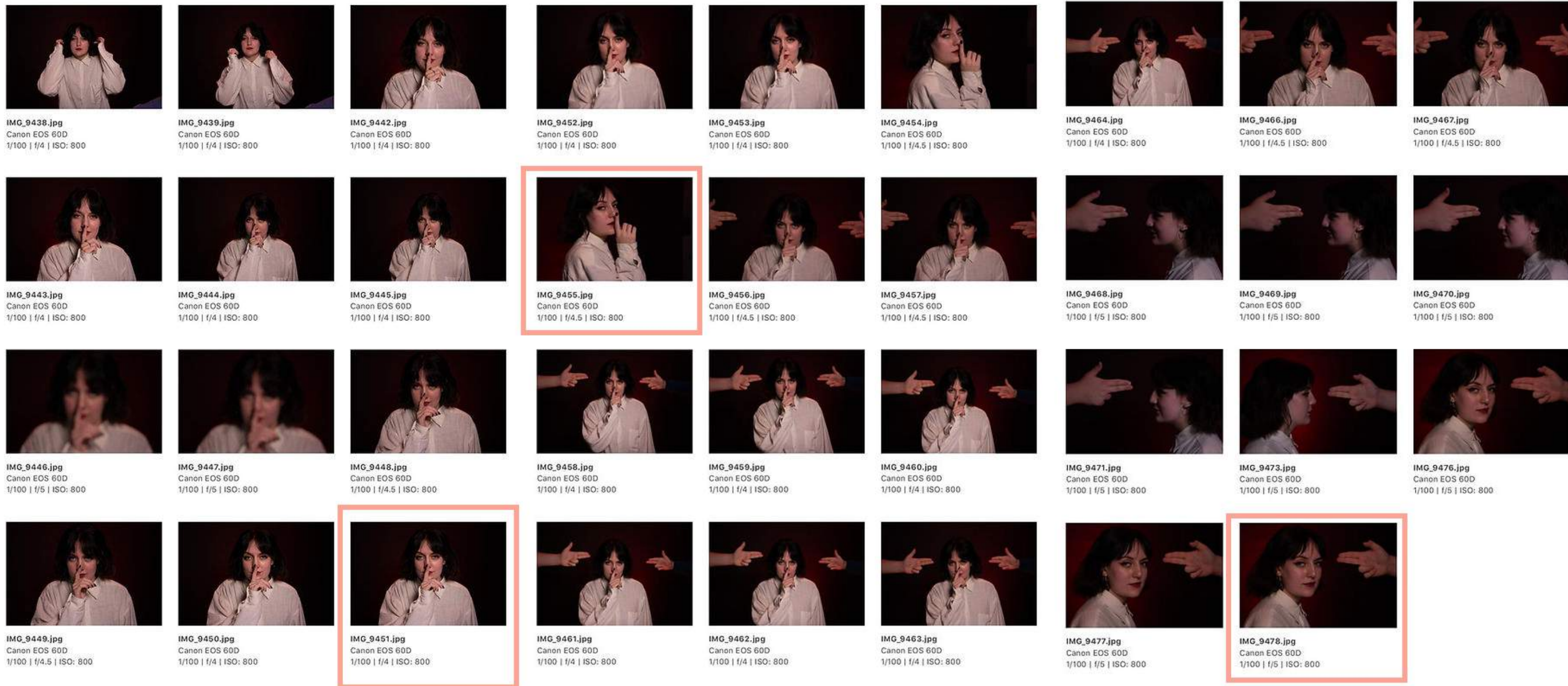
STEP 1

In your groups, review all of your footage and make notes based on the key features. Separate them into two different folders for good clips and bad clips. **DO NOT DELETE ANY CLIPS!!!!**

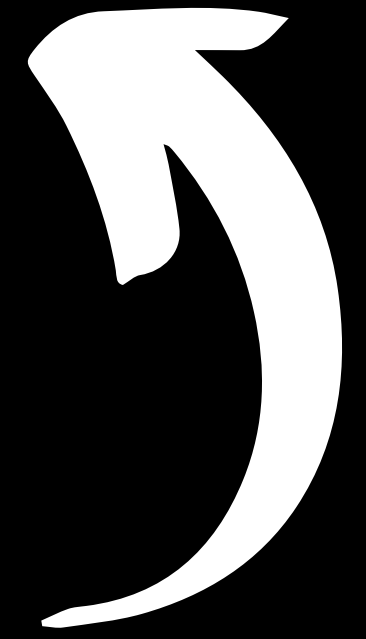
Take a screenshot of all of the clips you have recorded.

Once screen shotted, Highlight/circle/identify the clips you will be discussing from them!



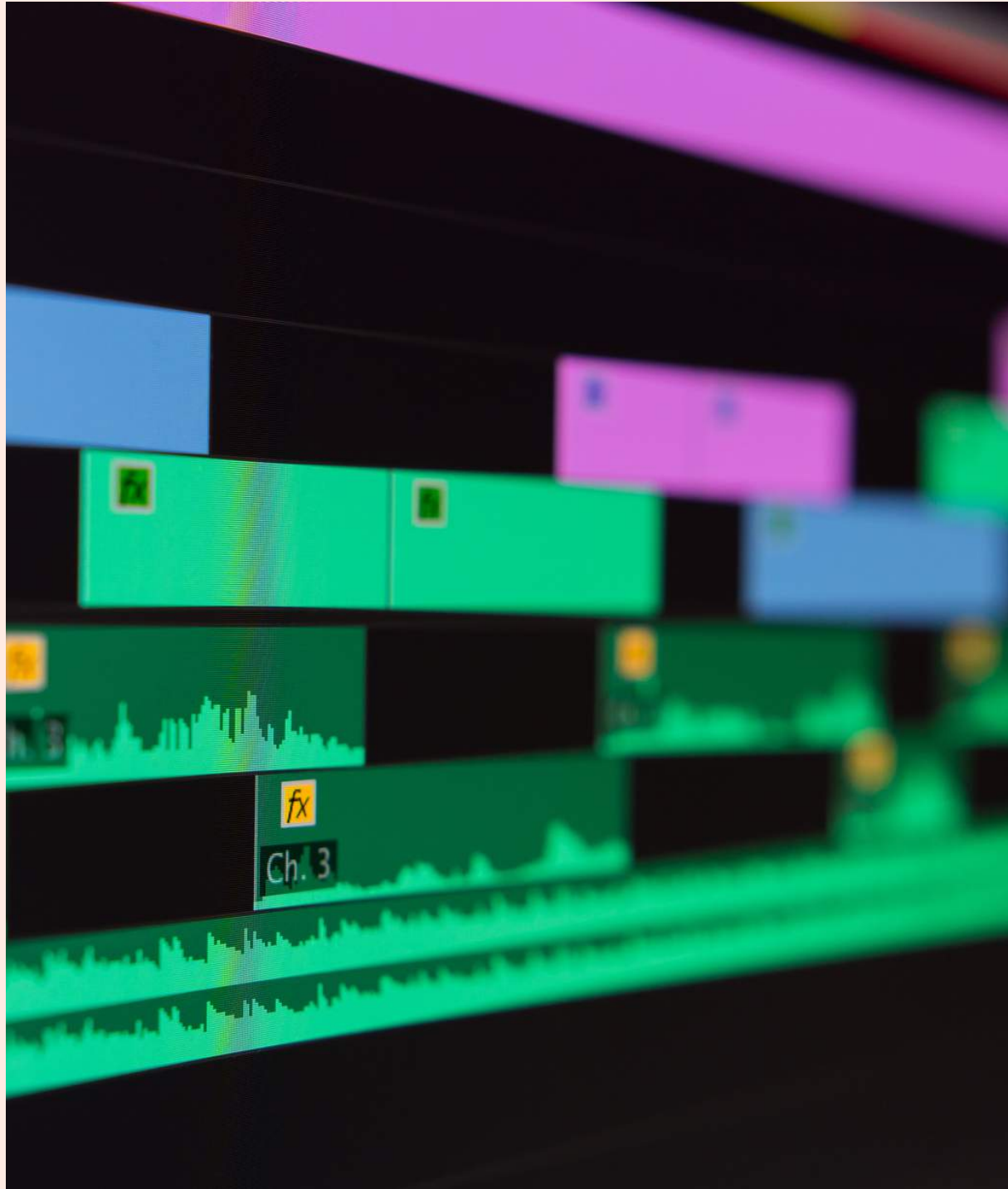


CLICK HERE FOR A CLOSER LOOK



Here is an example from Nia. As you can see, she has shown all of her files, and highlighted the ones in which she intends to discuss and why.

You can identify both good and bad clips. Good to show why you made the choice (the best lighting, the best acting performance). Bad to highlight areas for improvement (the camera in this scene is very shaky, therefore I will not be using it)



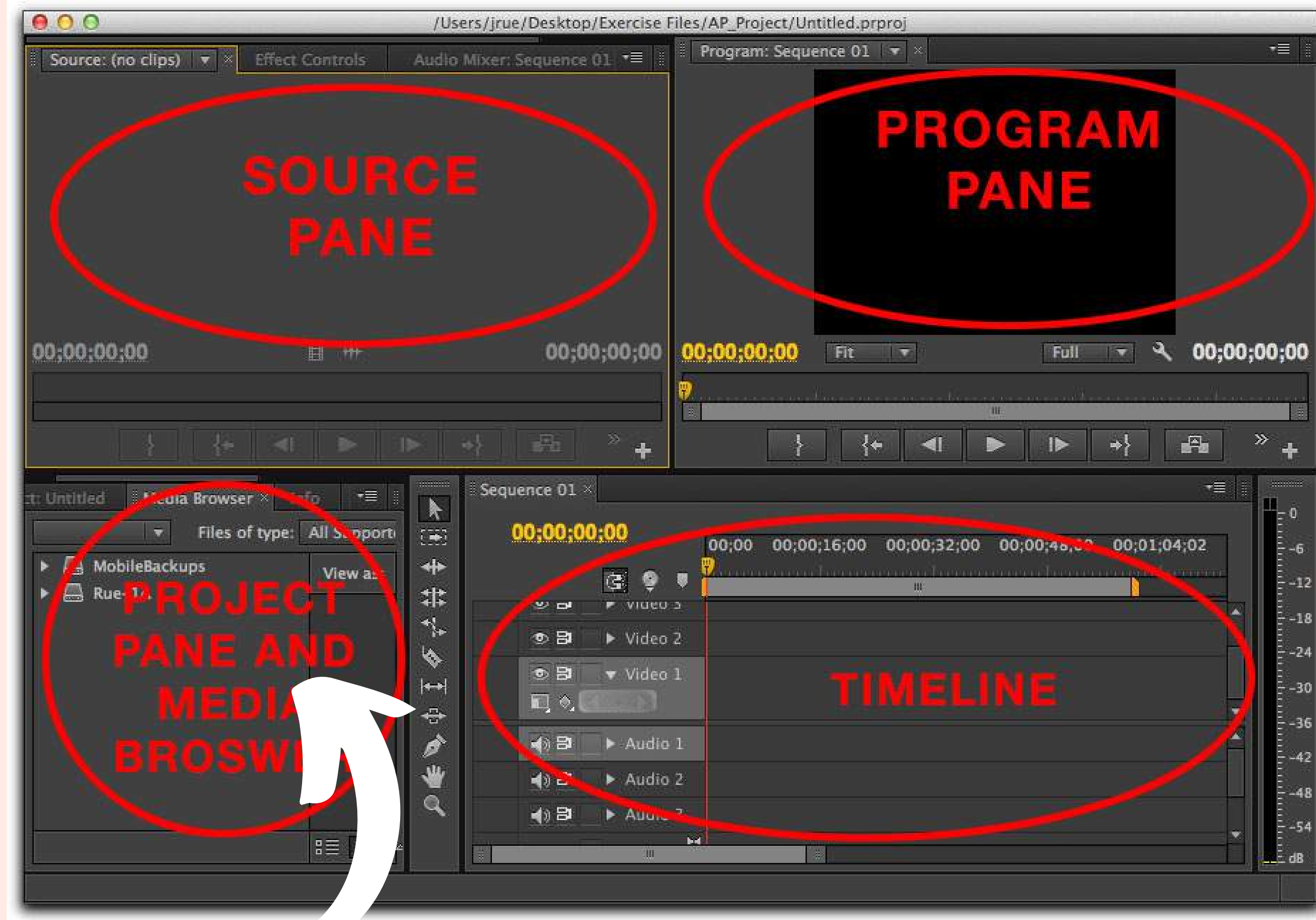
STEP 2

Import **ALL** of your clips into Prem Pro, yes, even the ones you are not using.

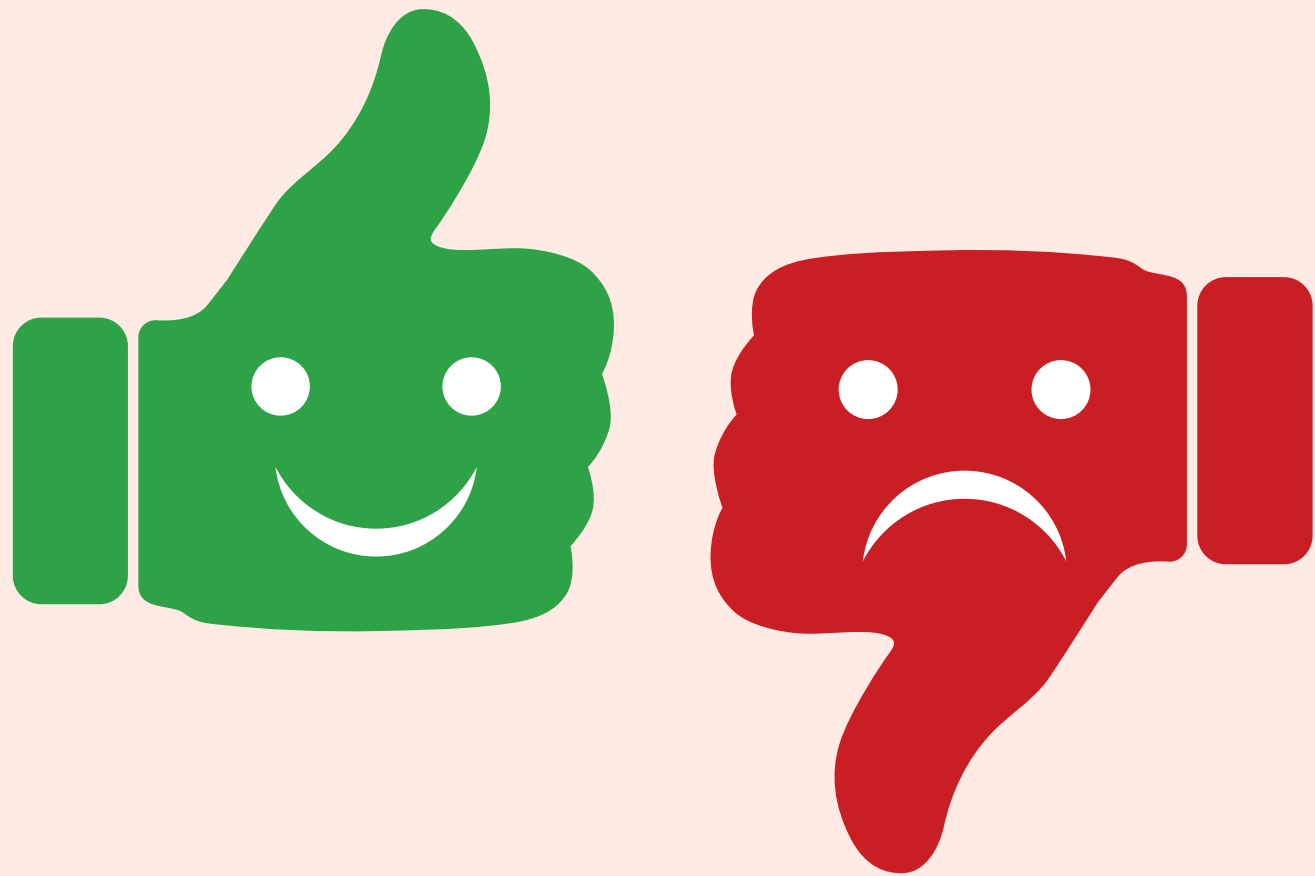
In the bottom left window (project panel). Create 2 folders and title them "Clips to use" and "rejects".

Screenshot these folders inside prem pro





This is where you will be creating the two folders



STEP 3

Place all the good clips into the "**USE**" folder.

Place all the bad clips into the "**REJECTS**" folder.

Screenshot the inside of both folders when you have sorted them.





STEP 4

Once all your clips are sorted and organised, select the clips you will be reviewing (5-10 of them).

Provide a detailed analysis on these clips and why you decided to highlight them based on our review criteria (slide 4). Do this on word, canva or powerpoint.

Image 9451

Original



Edited



This is one of my preferred images from the first photoshoot as I have successfully created a mysterious atmosphere using lighting, colour, positioning and a direct mode of address. Also, the pose creates a triangle shape which has connotations of stability and danger as well as drawing your eye up towards the main focal point of the photo (the face). This will appeal to my target audience as the image reflects the tone and topic of my podcast.

I edited this photo in Photoshop by, firstly, adding a noise reduction filter to remove the grainy texture that had been created from shooting with a high ISO. This, along with using the blur tool on a low strength in some areas, softened the image to create a smooth, more professional looking texture. Next, I used the healing brush tool to remove any noticeable blemishes in the skin before using the liquify tool to slightly alter my facial features and the dodge/burn tools to lighten/darken parts of the image to make it more appealing. I mainly focussed on darkening the hair and under the jaw. I lightened certain highlights of my face too, such as the cheekbones, nose and chin. Lastly, I moved on to focus on editing the background. To achieve the red-to-black gradient I used the brush tool in lighten mode on a low opacity and hardness and created a gradual dark-red-to-black gradient. Then, I added a lighter red and created a larger gradient. I repeated this process, lightening the red each time, until I achieved the perfect gradient and brightness in the background.

Here is another example, Nia has shown the image she has chosen, and discussed why she chose it. You can do the same by discussing the reasons as to why you have selected the clips you have.

You don't need to do this for every clip you record, just the ones you think are worth discussing (aim for 5+).

YOU DO NOT HAVE TO TALK ABOUT THE BEFORE AND AFTER OF YOUR EDITING YET!

[*CLICK HERE FOR A CLOSER LOOK*](#)



STEP 5

With the screenshots of your 2 folders in prem pro. Discuss why you have two separate folders on your prem pro workspace. How does this benefit you when editing and working

TIPS AND TRICKS

For writing about your folder organisation

- Helps me organise my workspace
- Gets rid of clutter
- The two folders are quicker and easier to find relevant clips
- By keeping my "**reject**" clips, I can access them if I need to, they are always there for me and my group



OTHER PIECES OF WORK

THAT YOU ALL NEED TO DO FOR
ME.

ALL OF THE RESOURCES FOR
THESE CAN BE FOUND ON MY
WEEBLY PAGE!

PLEASE LET ME KNOW IF YOU
NEED HELP!

1. Location Scouting documents
2. Evaluating your test shoot edits
3. Discussing your peer feedback on your test shoots



CLICK ON EACH IMAGE FOR A CLOSER LOOK

LOCATION SCOUTING EXAMPLES

IN ORDER TO REACH THE HIGHER GRADES, YOUR LOCATION SCOUTING DOCUMENTS NEED TO LOOK LIKE THIS!

You need to document every location you will be filming in. Pictures must be included of locations!

Living Room



- **Wide shot test** – A wide shot would be achievable in this room, however, some furniture may need to be moved.
- **360 test** – Some angles may need to be avoided in this room due backgrounds appearing cluttered and unprofessional.
- **Commercial Clearance** – Most of the art on the walls in this room was painted by my Mum, meaning I will have permission to include them in shots. Furthermore, there are no logos present in this room.
- **Indoor staging** – As my kit is quite small I will have more than enough space to film in this room; however, I will not have access to the LED strip lights.
- **Sunlight** – This room contains the largest window meaning it is the best to use for any indoor shots that require a lot of natural light.
- **VFX** – Some items may need to be removed during post-production as this is generally quite a cluttered space.



Bedroom



- **Wide shot test** – A wide frame would be acceptable in this room due to their being large, bare walls and furniture that is easily moveable if necessary; there are no problematic elements.
- **360 test** – I will have to be careful if I shoot close to the mirror as I don't want the reflection of the camera to be picked up in the shot as this will appear unprofessional.
- **Commercial clearance** – I will avoid filming any posters as they may include copyrighted artwork. Also, I will avoid including any logos in shots.
- **Indoor staging** – there is enough space for me and any necessary camera equipment to film comfortably in this room.
- **Sunlight** – The room is generally very bright in the day due to sunlight shining directly through the window into the room. Furthermore, it is more suitable to use the projector and LED strip lights in this room in the dark as the colours appear brighter when they aren't competing with sunlight. Due to this, I can shoot at any time of day depending on the lighting of the shot, something I will carefully consider when creating my shooting schedule.
- **VFX** – Nothing will need to be removed; however, I may choose to add VFX during post-production to improve the footage if I am unable to capture exactly what I want to during general production.



Kitchen

- **Wide shot test** – It would probably not be possible to capture a wide shot in this room as the cabinets would make the background appear extremely cluttered and therefore unprofessional; it doesn't match the style I have in mind for my video campaign.
- **360 test** – There are some angles to avoid in this room for similar reasons as avoiding a wide shot.
- **Commercial clearance** – Although there is no copyrighted artwork in this room, there are many logos on products on display that would have to be removed before filming.
- **Indoor staging** – there would definitely be space for equipment in this room although, similar to the living room, I won't have access to the LED strip lights.
- **Sunlight** – this room also contains a large mirror on the other side of the house, meaning direct sunlight shines through in the morning. This may be useful if I need any indoor shots with a lot of natural light.
- **VFX** – Similar to the living room, some items may need to be removed as this is generally a very cluttered space.



Link to peer review slides:



Link to editing evaluation slides:



Please let me know if you need help!

